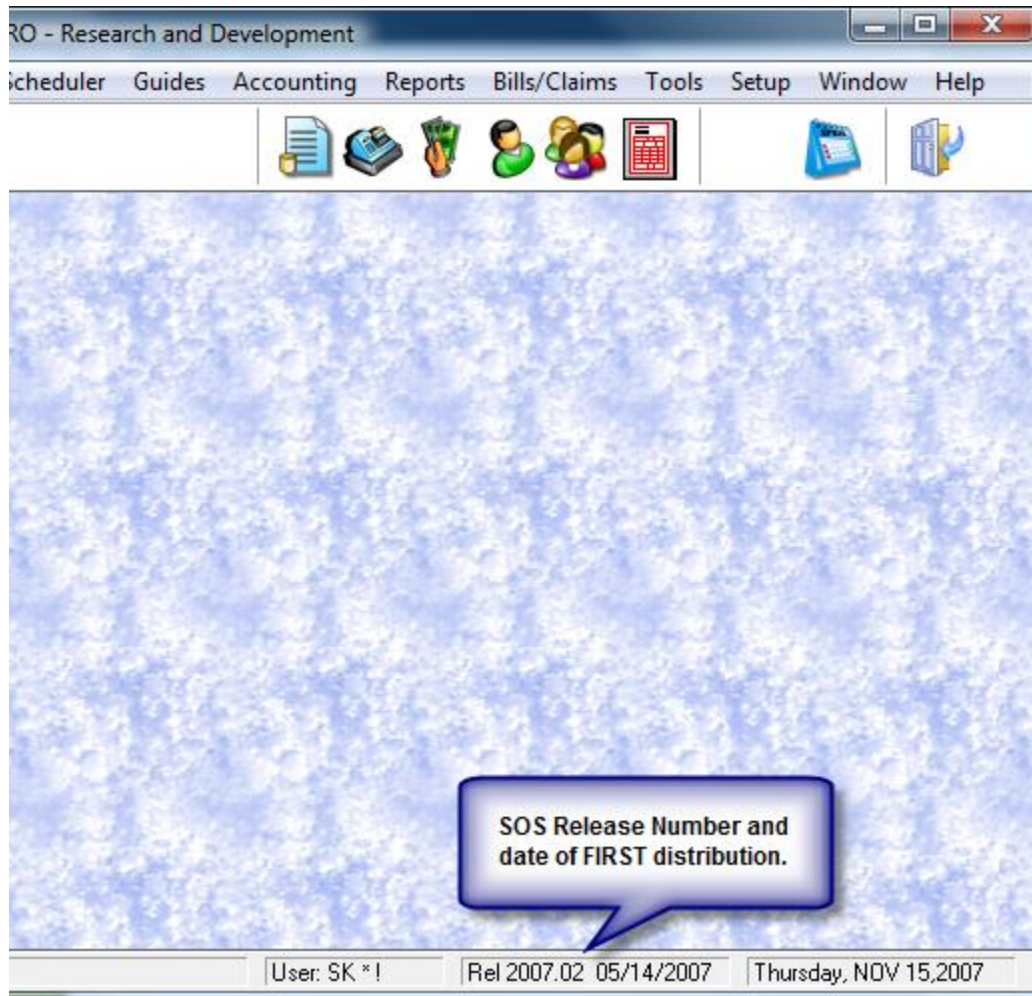


Synergistic Office Solutions, Inc.



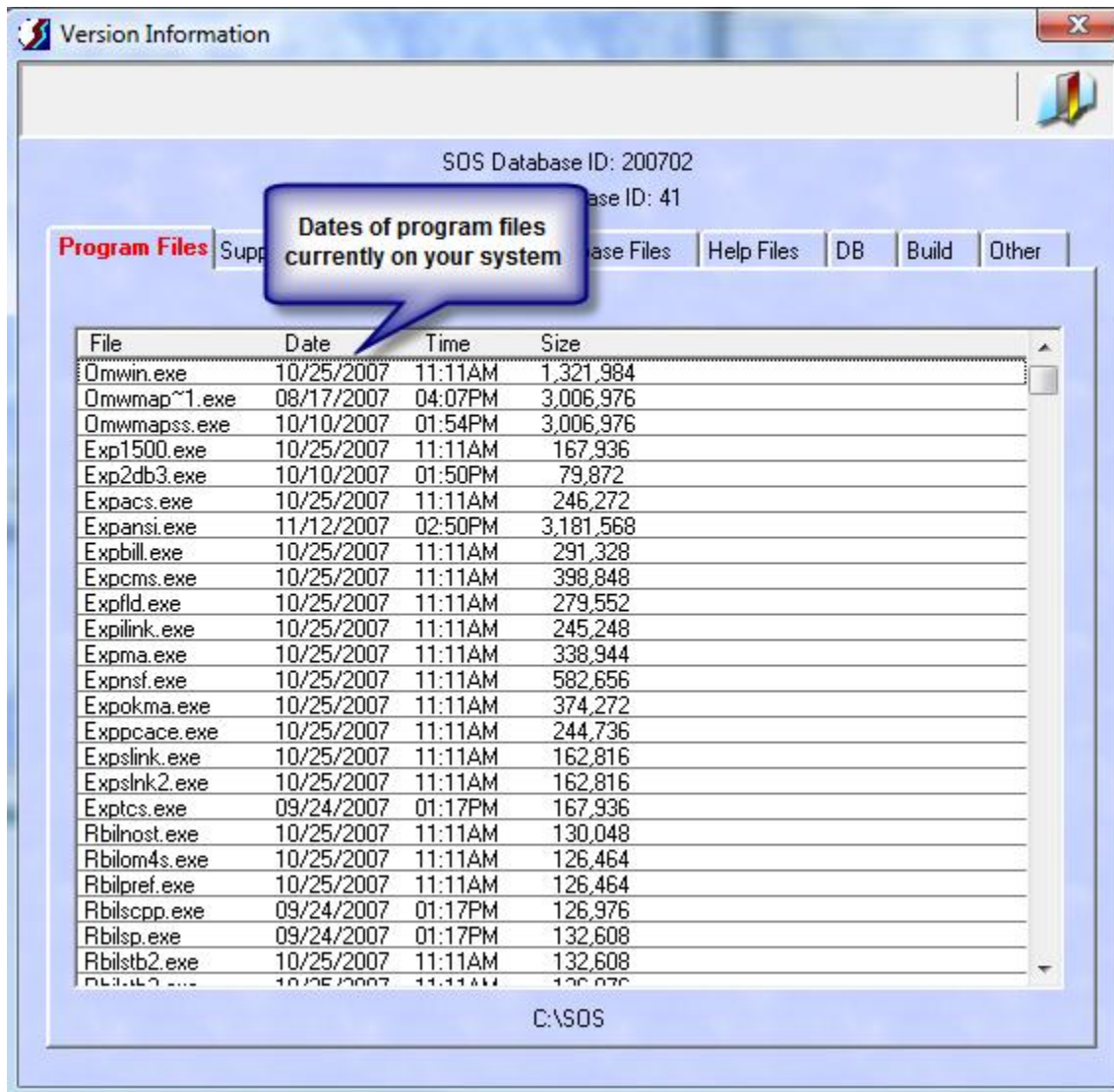
Topic: How to Check Your Software Version
Document ID: #494
Product: SOS Office Manager for Windows
Date: June 10, 2002
Author: Seth Krieger

The SOS release number you are currently running appears in the status bar at the bottom of your main menu:



The date in this panel is the date that this release was first distributed, not necessarily the date of the patch level you are presently running.

To determine the dates of the program files go to **Help > Version Information** on the main menu. A list similar to that below will appear:



Often you will find that most of these files have the same date. Look in particular at the files that start with “OM” or “CM” and end with “.dll”. You will have to scroll down past the initial “exe” files to find them. In general, the most recent date you find among those files will be the *build date* of the program you are running. If the current patch on the SOS web site is significantly more recent, then you should consider downloading and installing it.